

Delsys complete EMG and IMU integration with QTM

Delsys Trigno wireless and Trigno Avanti systems are completely integrated with Qualisys Track Manager (QTM). All the basic settings for the EMG devices as well as data acquisition can be done from the same software on a single laptop or desktop computer.

EMG data can be combined with data from force plates to get synchronized force, motion and EMG data.

Use the Delsys Trigno hardware as either an EMG or IMU device and synchronize the system with your Qualisys system for a full kinematic experience..

Data can also be viewed in real-time and exported to C3D, TSV or MATLAB.

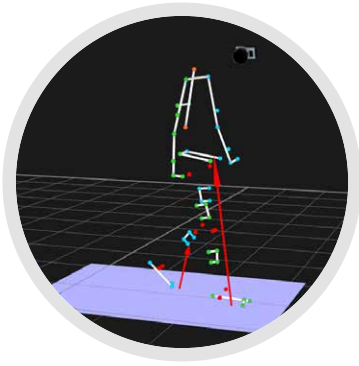


FEATURES

- Complete integration of EMG & motion data capture
- Runs on a single laptop
- Wireless Delsys Trigno simplifies setup
- Delsys Trigno Avanti support
- Up to 16 EMG channels
- Real-time feedback

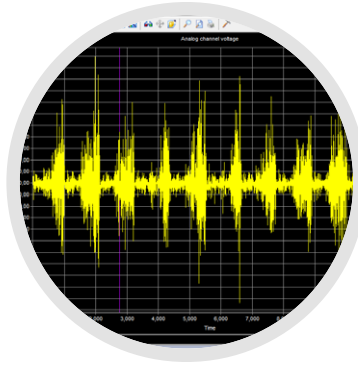
REQUIREMENTS

- Qualisys motion capture system
- Delsys Trigno or Avanti system with Trigger module
- Windows 7, Windows 8, or Windows 10



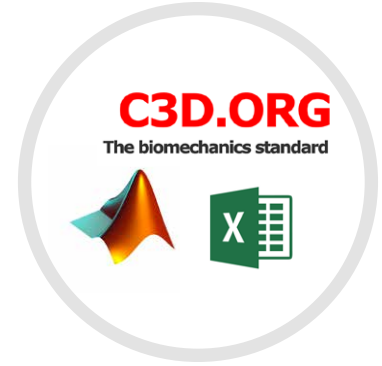
Combine with Force

Combine synchronized force & EMG or IMU data with motion capture data.



EMG data

Plot recorded EMG data or recorded IMU data, either in real-time or from a recorded file.



Export to C3D, TSV or MATLAB

QTM can export data to a number of formats, including C3D, TSV and MATLAB.

