



Combining eye tracking and motion capture

Qualisys supports a range of different eye trackers, both head mounted and desktop mounted. The eye trackers are either fully integrated with Qualisys Track Manager (QTM) partially integrated through the QTM real-time protocol (external program) or frame-synced with tQualisys camera system.

EYE TRACKING INTEGRATIONS

Tobii Pro and Ergoneers QTM integrated eye trackers let you collect and visualize eye tracker data in QTM. The eye tracker data is visualized as a gaze vector with a maneuverable vector trace. If used together with a Qualisys video camera, 3D overlay is also possible.

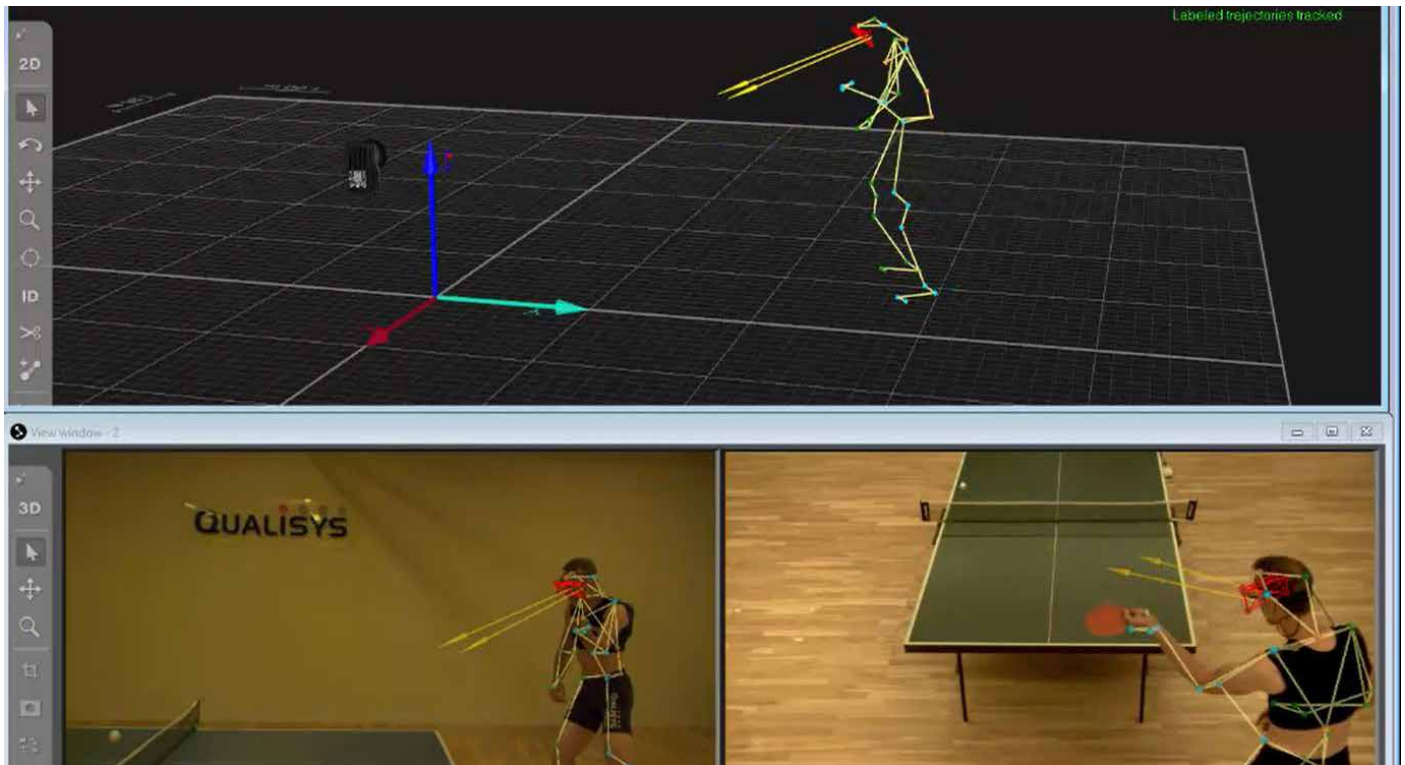
Naturally, eye tracker data can be plotted just like any other data type in QTM. Besides visualization, gaze vector data can be exported to TSV, MATLAB or be gathered externally through the real-time streaming protocol. Tobii Pro also has hardware sync which means that the integration starts both glasses and cameras at the same time.

EYE TRACKERS

- Tobii Pro Glasses 2
- Ergoneers Dikablis
- Smart Eye

BENEFITS

- Combine eye & body movements
- Understand human interaction
- Improve performance



EXAMPLES OF USE

L'imaginarium, Université Lille

Interaction between people
(Psychology)

TU Munchen

Interaction between human & robotics

University of Munster

Sport science activity

University of Birmingham

Interaction between people
(Psychology)



tobii pro

ERGONEERS



Requirement	Tobii Pro	Ergoneers Dikablis glasses	Smart Eye
Hardware sync	+	-	+
QTM integration	+	+	-
Gaze vector	+	+	-
Head mounted	+	+	-

Not possible -

Possible +

QUALISYS



qualisys.com

sales@qualisys.com

Qualisys Europe

Gothenburg, Sweden

Qualisys Americas

Chicago, USA

Qualisys Asia Pacific

Shanghai, China