



High speed video for your Miquis system

Miquis Video, available in both monochrome and color, is the native video camera for any Qualisys motion capture camera system. Miquis Video integrates seamlessly with our cameras. When calibrated together, it streams perfectly synchronized video for 3D data overlay.

SPEED

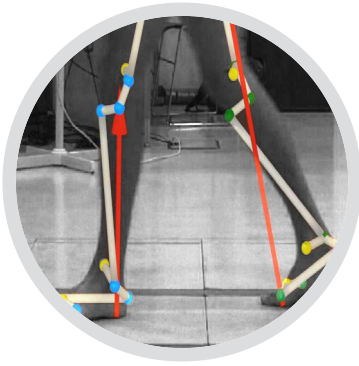
With its parallel on-board MJPEG encoder, the cameras are able to stream full HD video (1080p) at 85 frames per second. You can trade pixels for speed - capture at 330 fps and full field-of-view with a resolution of 0.5MP

OVERLAY

Since the Miquis Video calibrates simultaneously with the rest of the system, you will always have perfect 3D overlay available without any extra effort.

FEATURES

- High-quality video, available in monochrome or color
- Streams full HD at 85 fps
- Streams 0.5 MP at over 330 fps
- Synchronized 3D data overlay
- Seamless QTM integration
- Run standalone or together with any Qualisys mocap system



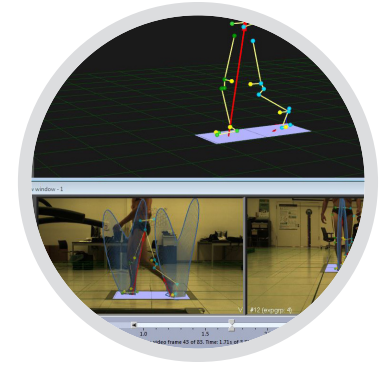
3D data overlay

As a single calibrated mocap system, 3D data can be visually aligned and drawn over the video capture.



Ease of use

Images can be displayed in monochrome or color, and no additional hardware or software is required.



Real-time streaming

Video is played back or streamed in real-time in the Qualisys Track Manager software

TECHNICAL SPECIFICATIONS

| | | |
|-----------------------|----------|--|
| Camera type | | Monochrome or color video camera |
| Video output | Full HD | 1920 x 1080 @ 85 fps |
| | HD | 1280 x 720 @ 180 fps |
| | 0.5 MP | 960 x 540 @ 330 fps |
| | VGA | 640 x 480 @ 550 fps |
| Lens | Standard | 9 mm, 61° x 37° FOV |
| | Narrow | 12.5 mm, 46° x 27° FOV |
| | Other | 25 mm, 24° x 14° FOV |
| Strobe | | White high-power LEDs |
| Streaming | | Yes |
| High speed video | | Yes |
| Video overlay | | Yes, through regular wand calibration |
| On-board compression | | Yes, MJPEG |
| Synchronization | | Automatically with Miquis cameras. Integrates with Miquis sync unit for external sync. |
| Connection | | 1-connector daisy-chained Gigabit Ethernet and power |
| Operating temperature | | 0-35 °C |
| Camera body | | 140 x 84 x 84 mm (5.5 x 3.3 x 3.3 inches) Weight: ~ 0.7 kg (1.54 lbs) |
| Anti-theft | | Kensington lock |
| Lens mount | | C |