

# *ACCESSORIES*



A close-up photograph of a person's neck and upper chest. They are wearing a black t-shirt. The QUALISYS logo is printed on the chest. The logo consists of the word "QUALISYS" in a white, sans-serif font. Above the letters "I", "S", "Y", and "S" are four small white circles. The first circle, positioned above the "I", has a small orange dot in its center. The background is a solid, muted grey.

QUALISYS

# Table of contents

<b>Passive markers .....</b>	<b>4</b>	<b>Calibration equipment.....</b>	<b>10</b>
Super-spherical markers		Wand calibration set	
Soft markers		Wand replacement set	
Hand-coated markers		Lens correction matrix	
<b>Specialty markers.....</b>	<b>5</b>	<b>Camera mounting devices.....</b>	<b>11</b>
Soft markers with X-base (velcro)		Tripods and heads	
Facial markers		Wall mounting bracket	
Underwater markers		Super clamp	
Retro-reflective sheet		Aluminum rails	
<b>Marker accessories .....</b>	<b>6</b>	<b>External devices &amp; connections.....</b>	<b>12</b>
Marker bases		Eye tracking devices	
Cluster for gait analysis		Force plates	
Glue and tape for attaching markers to the skin		EMG devices	
<b>Mocap suits &amp; accessories.....</b>	<b>7</b>	<b>Trigger &amp; sync devices.....</b>	<b>13</b>
Mocap Suits		USB Analog acquisition interface	
Mocap Hat		Split cables	
Hand and Footwear		Trigger switches	
<b>Active markers .....</b>	<b>8</b>	Camera sync units	
Long Range Active Markers		<b>Cabling &amp; power.....</b>	<b>14</b>
Active marker deck for Crazyflie integration		Data/power cables	
Naked Traqr		Power supply kits	
<b>Tracking Devices .....</b>	<b>9</b>	<b>Additional accessories.....</b>	<b>15</b>
Active Traqr		Computers	
Passive Traqr		Carrying cases	
Traqr accessories and parts		Sun Filters	



## Did you know?

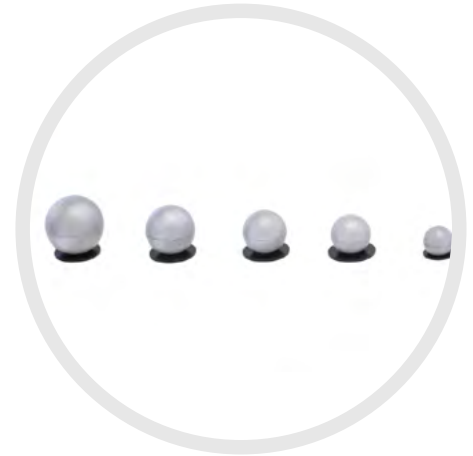
Accessories are now available for credit card purchase on the Qualisys website. Online purchases are currently only available in the EU, US, Norway, Switzerland and UK.

Check out our webshop by visiting:  
[qualisys.com/hardware/accessories](https://qualisys.com/hardware/accessories).

## SUPER-SPHERICAL MARKERS

Super-spherical markers come with a thin and light-weight base, making them the ideal choice when markers are attached to the skin or objects with double-sided adhesive tape. The markers are designed for maximum roundness.

Article no.	Description
160300	Marker - super-spherical Ø6.5mm M3, 10 pc
160301	Marker - super-spherical Ø6.5mm M3, 50 pc
160302	Marker - super-spherical Ø6.5mm M3, 100 pc
160310	Marker - super-spherical Ø8mm M3, 10 pc
160311	Marker - super-spherical Ø8mm M3, 50 pc
160312	Marker - super-spherical Ø8mm M3, 100 pc
160320	Marker - super-spherical Ø9.5mm M3, 10 pc
160321	Marker - super-spherical Ø9.5mm M3, 50 pc
160322	Marker - super-spherical Ø9.5mm M3, 100 pc
160330	Marker - super-spherical Ø12.5mm M4, 10 pc
160331	Marker - super-spherical Ø12.5mm M4, 50 pc
160332	Marker - super-spherical Ø12.5mm M4, 100 pc
160340	Marker - super-spherical Ø14mm M4, 10 pc
160341	Marker - super-spherical Ø14mm M4, 50 pc
160342	Marker - super-spherical Ø14mm M4, 100 pc
160360	Marker - super-spherical Ø16mm M4, 10 pc
160361	Marker - super-spherical Ø16mm M4, 50 pc
160362	Marker - super-spherical Ø16mm M4, 100 pc
160380	Marker - super-spherical Ø19mm M4, 10 pc
160381	Marker - super-spherical Ø19mm M4, 50 pc
160382	Marker - super-spherical Ø19mm M4, 100 pc



## SOFT MARKERS

Soft markers are rather durable units. They consist of two major parts: the marker itself with an inbuilt screw and a two-sided neoprene base. The marker is a foam ball covered by a scotch-lite reflective film. Each package contains 10 markers.

Article no.	Description
160156	Marker - Soft Ø12.5 mm with 38 mm neoprene base
160155	Marker - Soft Ø15 mm with 38 mm neoprene base
160154	Marker - Soft Ø19 mm with 38 mm neoprene base
160157	Marker - Soft Ø25 mm with 38 mm neoprene base

## HAND-COATED MARKERS

These hard, threaded markers can be screwed onto rigid clusters, calibration frames & wands. Available at sizes up to 50 mm. Sold individually.

Article no.	Description
160051	Marker - spherical threaded Ø12 mm
160053	Marker - spherical threaded Ø16 mm
160052	Marker - spherical threaded Ø19 mm
160059	Marker - spherical threaded Ø30 mm
160055	Marker - spherical threaded Ø40 mm
160056	Marker - spherical threaded Ø50 mm





### SOFT MARKERS WITH X-BASE (VELCRO)

These markers are designed with a velcro X-shaped base, ensuring that they will not come off during a take - a preferred choice for applications such as animation.

Article no.	Description
160550	Marker - Soft Ø9mm X Base with velcro, 10pc
160555	Marker - Soft Ø9mm rectangle (finger) base with velcro, 10pc
160570	Marker - Soft Ø14mm X Base with velcro, 10pc
160580	Marker - Soft Ø19mm X Base with velcro, 10pc

### FACIAL MARKERS

These markers are ideal for facial motion capture. The 2.5 mm marker is pre-glued for direct skin attachment. The 4 mm marker is attached with double adhesive tape.

Article no.	Description
160043	Marker - super-spherical, Ø2.5mm pre-glue, 10 pc
160044	Passive Marker - Spherical, Ø4 mm , 10 pc

### SUPER-SPHERICAL UNDERWATER MARKERS

These underwater markers are more durable than the taped underwater markers and suitable for long-time use underwater. (Only recommended for underwater use).

Article no.	Description
160350	Marker - super-spherical Ø14mm UW M4, 10 pc
160351	Marker - super-spherical Ø14mm UW M4, 50 pc
160352	Marker - super-spherical Ø14mm UW M4, 100 pc
160370	Marker - super spherical Ø16mm UW M4, 10 pc
160371	Marker - super-spherical Ø16mm UW M4, 50 pc
160372	Marker - super-spherical Ø16mm UW M4, 100 pc
160390	Marker - super-spherical Ø19mm UW M4, 10 pc
160391	Marker - super-spherical Ø19mm UW M4, 50 pc
160392	Marker - super-spherical Ø19mm UW M4, 100 pc

### HAND-COATED UNDERWATER MARKERS

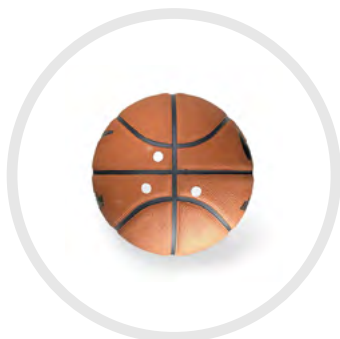
Since retro-reflective properties are lost when ordinary passive markers are underwater, each threaded spherical body is covered in a retro-reflective tape, suitable for underwater use (sold separately). For use both above and underwater.

Article no.	Description
160061	Marker - Spherical threaded Ø19 mm UW
160060	Marker - Spherical threaded Ø30 mm UW
160062	Marker - Spherical threaded Ø40 mm UW
160063	Marker - Spherical threaded Ø50 mm UW
160064	Underwater - Retro-reflective Tape, 1000x50 mm

### RETRO-REFLECTIVE SHEET

Cut a piece of the 210x297mm sheet to create a flat reflective marker. The back of the sheet is adhesive, so the tape attaches directly to surfaces like balls or similar.

Article no.	Description
160043	Marker - Retro-reflective tape, Sheet, 210x297 mm



## MARKER BASES

Thin, light-weight marker bases with M3 or M4 thread. Can be used on its own with other types of markers or as a spare part for Super-spherical markers.

Article no.	Description
160395	Marker - plastic base Ø10mm M3, 10 pc
160396	Marker - plastic base Ø16mm M4 , 10 pc

## CLUSTER FOR GAIT ANALYSIS

Rigid fixtures to keep markers attached to the upper and lower body parts are held in place on the body with a Fabrifoam SuperWrap strap (included). The custom-molded clusters have soft rubber dots to minimize slipping on the skin and brass inserts with female UNC 6-32 threads to attach up to three soft markers for the upper body and four soft markers for the lower body (markers are included).

Article no.	Description
160145	2 Marker clusters, lower body with 8 markers and band
160146	2 Marker clusters, upper body with 6 markers and band
160149	Replacement SuperWrap strap for cluster

## TAPE

Skin-friendly, extra-sticky adhesive tape to attach markers to the skin. The tape is hypoallergenic and suitable for medical applications. Available in two different widths, where the more narrow version is ideal to quickly prepare markers.

Article no.	Description
160188	Tape, double adhesive for applying markers on skin

## LEUKOTAPE CLASSIC

Use this non-reflective tape with a matte finish, to cover unwanted reflections on sport shoes and other items, to create extra support for markers during fast movements, or attach it to the object as a base layer to provide an ideal surface for attaching markers with double-adhesive tape on top of it.

Article no.	Description
160186	Sport tape (Leukotape Classic)

## GLUE FOR ATTACHING MARKERS ON SKIN<sup>1</sup>

For especially demanding applications, glue can be used as option to double adhesive tape. This can be the case for long underwater usage or in some cases during the measurement of animals.

Article no.	Description
160185	Glue Mastix Silicone 30 ml, suitable for attaching base on skin
160187	Glue Mastix Spirit Gum 50 mm, for applying markers on skin
160184	Remover Mastix 100 ml

<sup>1</sup> Ships via truck or lorry only





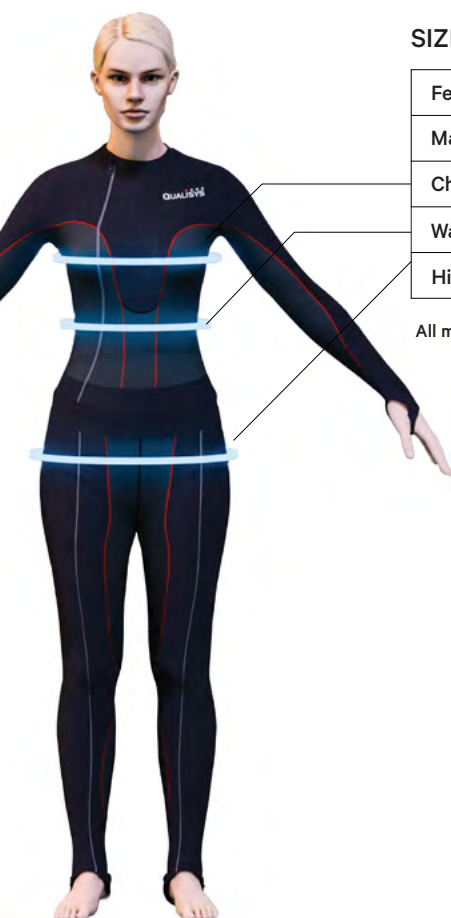
Qualisys mocap suits are made for precise human movement tracking. The suit wraps naturally around the body while providing increased breathability due strategic velcro placement. T-pose guides along each arm clearly indicate the slightest twist or snag in the fabric, even from a distance. Suits are available as one-piece or two-piece suits. Custom sizes upon request.

## MOCAP SUITS

Article no.	Description
160500	Mocap Suit - Two Piece unisex (woman XS/man XXS)
160501	Mocap Suit - One Piece unisex (woman XS/man XXS)
160502	Mocap Suit - Two Piece unisex (woman S/man XS)
160503	Mocap Suit - One Piece unisex (woman S/man XS)
160504	Mocap Suit - Two Piece unisex (woman M/man S)
160505	Mocap Suit - One Piece unisex (woman M/man S)
160506	Mocap Suit - Two Piece unisex (woman L/man M)
160507	Mocap Suit - One Piece unisex (woman L/man M)
160508	Mocap Suit - Two Piece unisex (woman XL/man L)
160509	Mocap Suit - One Piece unisex (woman XL/man L)
160510	Mocap Suit - Two Piece unisex (woman XXL/man XL)
160511	Mocap Suit - One Piece unisex (woman XXL/man XL)
160512	Mocap Suit - Custom



*\*Easily identifiable color-coding per size,*



## SIZE GUIDE

Female	XS	S	M	L	XL	XXL
Male	XXS	XS	S	M	L	XL
Chest	78/31	84/33	90/35	96/38	102/40	108/42
Waist	66/26	72/28	78 /31	84/33	90/35	96/38
Hip	86/34	92/36	98/39	104/41	110/43	116/46

All measurements are displayed in cm/in



## MOCAP HAT

Article no.	Description
160535	Mocap Suit - Hat



## MOCAP GLOVES

Article no.	Description
160530	Mocap Suit - Fingerless gloves (S/M)
160531	Mocap Suit - Fingerless gloves (L/XL)

## MOCAP FOOTWEAR

Article no.	Description
160536	Mocap Suit - Footwear S/M
160537	Mocap Suit - Footwear L/XL

Footwear is wrapped around the foot to give enhanced freedom of movement and comfort while providing a secure base for critical markers and anti-slip grip.

## LONG RANGE ACTIVE MARKERS

### – Marine & Industrial applications



The Long Range Active Marker driver unit drives up to four active markers and is triggered by an IR detector or another driver unit (or any other sync source). It can be powered either from a rechargeable Li-Ion battery or any 12VDC source, and can track over 100 m away at frequencies up to 200 fps. All are IP65 splash proof.

Article no.	Description
160685	Active Marker - Long Range - Kit 4 markers
160670	Active Marker - Long Range - Driver for 4 markers
160671	Active Marker - Long Range - Marker 50mm, 5 meter
160678	Active Marker - Long Range - IR Receiver, 5 meter
130434	Calibration kit, Active Marker - Wand 1000, Long range with drivers

## ACTIVE MARKER DECK FOR CRAZYFLIE INTEGRATION



The active marker deck gives uses robust and long range tracking using Qualisys QTM. The deck supports up to 4 IDs so it's possible to have many different configurations without having to carry around bulky spherical markers.

Article no.	Description
230181	Active deck for Crazyflie

## NAKED TRAQR



Embed the Naked Traqr into objects, such as drones, for effortless and harmonious tracking. Kit includes Naked Traqr, IR detector, 8 NIR LEDs, 20 150mm pre-crimped wires, 2 LED connectors, 1 IR detector connector. Battery sold separately (1200mAh).

Article no.	Description
160691	Naked Traqr Kit (excl. battery)
160699	Battery for Naked Traqr
160700	HP Reverb clip-on (incl. Naked Traqr)



Qualisys is one of the few motion capture companies that uses both passive and active markers together with the same hardware and software. They are used in large volumes and environments where reflections can cause problems.





## ACTIVE TRAQR

Plated with four sequence coded active markers, the lightweight Active Traqr provides accurate positional and orientational data in real-time. Purchase Active Traqrs individually or in a set of 6. Mounts are included with your purchase. They are charged with USB-C charging devices, which can be purchased separately.

Article no.	Description
160690	Active Traqr (incl. screw mount)
160698	10 port charger for Traqr/Naked
160706	1 player kit (6 Traqrs with body mounts)

## PASSIVE TRAQR

The Passive Traqr provides a versatile way of creating and using passive rigid bodies. Track multiple objects using unique marker patterns by combining marker rods of 4 different lengths in 13 different positions.

Article no.	Description
160707	Passive Traqr - Start kit (1 rigid body incl. markers)
160708	Passive Traqr - Assortment kit (20 rigid bodies excl. markers)

## TRAQR MOUNTS

Easily attach the active or passive Traqrs to hands and feet using strap mounts. Screw mounts are also available for attachment to objects or HMDs.

Article no.	Description
160692	Traqr - Strap mounts (10pcs)
160693	Traqr - Screw mounts (10pcs)
160694	Traqr - Straps for hands (10pcs)
160695	Traqr - Straps for feet (10pcs)

## PASSIVE TRAQR RODS

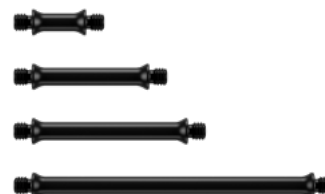
Rods come in 4 different lengths: 12mm, 26mm, 35mm, 63mm / 0.5", 1", 1.5", 2.5"

Article no.	Description
160702	Rigid body rod 12mm (10 pcs)
160703	Rigid body rod 26mm (10 pcs)
160704	Rigid body rod 35mm (10 pcs)
160705	Rigid body rod 63mm (10 pcs)

## PASSIVE TRAQR BASE

A 53mm/ 2" base has 13 M4 mounting points compatible with both mounts. Purchase includes screw mount.

Article no.	Description
160701	Rigid body base - (10 pcs)



## WAND CALIBRATION SET

Set includes wand, folding L-shaped reference structure, and custom carrying case.

### RECOMMENDED SIZES FOR DIFFERENT VOLUMES:

Article no.	Description	Volume
130462	Calibration kit 120, with 120 wand	< 1 m <sup>3</sup>
130460	Small carbon calibration kit, 300 wand	1 m <sup>3</sup> – 12 m <sup>3</sup>
130456	Carbon calibration kit, 600 wand	> 12 m <sup>3</sup>
130453	Active calibration kit	



#### Water level

2 water levels to help create an upright coordinate system.



#### Floor-aligned origo

Properly align the coordinate system with your lab floor.



#### Level adjustment

Get the L leveled quickly with the level adjustment screws.



#### Force plate alignment

Secure the L with a force plate using alignment plates.



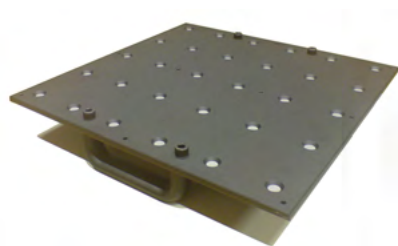
## WAND REPLACEMENT SET

A Wand Replacement Set can be purchased, consisting of four spherical markers to replace L-frame markers, and a factory calibrated marker rod.

Article no.	Description
130461	Wand 300 replacement set
130458	Wand 600 replacement set

## LENS CORRECTION MATRIX

The lens correction matrix is needed to perform a new linearization after changing camera lenses.



Article no.	Description
200026	Lens correction matrix (6x5 rows)

For an interactive tool giving you the knowledge of which lenses are compatible with which cameras go to: <https://www.qualisys.com/hardware/miqus/#tech-specs>

## TRIPODS AND TRIPOD HEADS

Manfrotto tripods provide solid support and flexibility for the cameras. The 3-way tripod heads are designed to carry a specific load. Large ergonomically designed hand grips ensure effortless vertical and lateral tilting and 360 degree panning.

Article no.	Description	Height and weight
200074	Manfrotto head [MH 804-3W]	0.75 kg / 1.65 lb (capacity: 4 kg / 8.8 lb)
200091	Manfrotto head, Miquis [494]	0.3 kg / 0.66 lb (capacity: 3 kg / 6.6 lb)
200093	Manfrotto head, Arqus [496]	0.4 kg / 0.88 lb (capacity: 4 kg / 8.8 lb)
200071	Manfrotto tripod [028B]	227 cm / 89.4" cm; 4.2 kg / 9.2 lb
200072	Manfrotto tripod [161MK2]	267 cm/105.1"; 7.9 kg / 17.5 lb
200078	Manfrotto tripod [055]	170 cm / 66.9"; 2.5 kg / 5.5 lb
200090	Manfrotto tripod [290]	160 cm / 63.2"; 1.8 kg / 3.9 lb



## WALL MOUNTING BRACKET

The wall mounting bracket for Miquis cameras is a customizable mounting kit that offers 12 options for mounting. It includes a base for solid surfaces, a T-bar clip for drop ceiling rails, and provides a tilt of up to 190° and rotation of 360°.

Article no.	Description
200442	Wall Mounting bracket for Miquis camera [845-246]
200443	Wall Mounting Bracket [HIWBS]



## SUPER CLAMP

Manfrotto super clamp is designed to lock around a pole or tube. The clamp range is 13 - 55mm, the super clamp is ideal for small spaces or for use on existing interior. Note: A tripod head is needed to mount a camera.

Article no.	Description
200073	Mounting Device - Super Clamp w Tap 1/4"



## ALUMINUM RAILS

Custom wall mounting solutions can be dimensioned based on your specific capture environment. The aluminum rails are very sturdy and cameras can be placed anywhere along the rail, which is ideal for repositioning your cameras.

Article no.	Description
200082	Mounting device - Rail system, per meter



*Integrate third-party devices with your Qualisys hardware & software. The below devices require additional components or accessories to stimulate a powerful and seamless integration. Qualisys systems can also integrate with Instrumented Treadmills manufactured by Bertec, AMTI, Treadmetrix, h/p/cosmos, and Motek, along with IMU devices from Xsens, Delsys, Cometa/Myon, and Noraxon.*

### EYE TRACKING DEVICES

Qualisys supports a range of different eye trackers, both head mounted and desktop mounted. Tobii Pro eye trackers are fully integrated with QTM, Ergoneers Dikablis glasses are partially integrated through the QTM real-time protocol, and Smart Eye devices are frame-synced with the Qualisys camera system.

The following parts are needed to run the eyetracker integrations

Article no.	Description
<b>150159</b>	EyeTracker Plugin for QTM
<b>230180</b>	TOBII - Qualisys Integration Kit
<b>160333</b>	12.5mm M3, 10 pc TOBII (optional)



### FORCE PLATES

With a force plate, ground reaction forces can be captured together with the motion capture data. QTM supports the calculation of force data from manufacturers AMTI, Bertec and Kistler.

To integrate with Kistler force plates, extra cables are needed to connect the A/D board to the Kistler box, and for QTM control. Contact your regional sales manager for a quote.

Article no.	Description
<b>Contact us</b>	Kistler - Cable Digital Channel USB64 to 5606 2xDSUB37M, 5 m
<b>Contact us</b>	Kistler - Cable Digital Channels USB64 to 2 x 5233A2



### EMG DEVICES

With an EMG device the muscle activity can be measured together with the motion capture data. Any EMG system with analog output can be connected to an analog board and then captured in QTM. The Delsys Trigno, Mega ME6000 and Noraxon EMG devices are integrated with QTM to support wireless collection without an extra analog board.

Additional parts are needed to run wireless Noraxon and Mega EMG systems. Contact your regional sales manager for a quote.

Article no.	Description
<b>Contact us</b>	MEGA - Wireless Trigger for synchronization
<b>Contact us</b>	Noraxon - Sync Cable, DTS to Qualisys [N-580H]



## ANALOG INTERFACE

The Qualisys analog interfaces connect via USB and work on both laptop and desktop computers. They come in two models, one with 16 channels and one with 64 channels. Both are continuously synchronized with Qualisys cameras.

Article no.	Description
<b>230597</b>	Qualisys USB Analog Acquisition interface, 16 channels (BNC/USB)
<b>230599</b>	Qualisys USB Analog Acquisition interface, 64 channels (BNC/USB/19"rack)

## TRIGGERS AND SWITCHES

The external trigger is used to send an external start pulse to the Qualisys camera system. It consists of an external push-button. A split cable is needed to connect the wired trigger switch. The wireless trigger switch connects via USB receiver and plugs into the host computer. A network switch is required for 20+ camera marker-based systems (170520/4/5) and 3+ camera Video/Hybrid systems (170522/3).

Article no.	Description
<b>510860</b>	External Trigger 10 m, for series 5,6, and 7
<b>510865</b>	Wireless Trigger
<b>510872</b>	Trigger button for Camera Sync Unit
<b>170520/4/5</b>	Ethernet - Switch, 8 ports, Netgear Gs108TV3 - (EU / US / UK)
<b>170522/3</b>	Ethernet - Switch, 8 ports 1Gb / 2 ports 10Gb, ASUS Xg-U2008 (EU / US )

## SPLIT CABLE

The split cable for camera series 5+, 6+, and 7+ connects to the "Control" port of the camera and provides BNC-connections to the trigger, sync inputs and to the sync output. Synchronize to an external source and configure to accept almost any type of sync signal. Complement with BNC-BNC cables.

Article no.	Description
<b>510870</b>	Sync/Trig/Sync in Splitter, for series 5,6, and 7

## SYNC UNITS

3D motion capture systems can provide great detail on the motion of humans, animals, robots and just about anything that moves. Even greater detail on the object can be gathered if the motion data is combined with data from other devices, such as force plates, EMG, eye trackers or analog data.

Article no.	Description
<b>410850</b>	Camera Sync Unit with SMPTE, IRIG and Video
<b>510885</b>	Sync Unit for series 5,6, and 7 with SMPTE and Video
<b>510890</b>	Sync Device Audio FireWire Audio Interface MOTU 828MK3 Hybrid





## DATA/POWER CABLES FOR MIQUS AND ARQUS

Article no.	Description
410820	Miquis/Arqus Camera cable 10 m
410822	Miquis/Arqus Camera cable 5 m
410823	Miquis/Arqus Camera cable 2 m
410824	Miquis/Arqus Camera cable 25 m
610831	Camera coupler <sup>2</sup> – Arqus standard and Miquis

## POWER SUPPLY KIT FOR MIQUS AND ARQUS

Article no.	Description
410800/3/4	Power Kit - Miquis/Arqus - Supply, injector & host cable (EU / UK / US)
410801	Power Injector - Miquis/Arqus, spare part
410802	Power Supply - Miquis/Arqus, spare part
410821	Host Cable - Miquis/Arqus, 5 m, spare part

## PROTECTED CABLING FOR ARQUS

Article no.	Description
610800/1/2	Power kit EU / UK / US – Arqus protected
610820	Host cable – Arqus protected 5m, spare part
610821	Camera cable - Arqus protected 15m
610830	Camera coupler – Arqus protected

## CABLING FOR CAMERA SERIES 5+,6+ AND 7+<sup>3</sup>

Article no.	Description
510828	Host cable, 8 m
510821	Host cable, 15m
510826	Host cable, 30 m
510824	Data cable, 8 m
510822	Data cable, 15 m
510827	Data cable, 30 m
510823	Data/power cable, 8 m
510820	Data/power cable, 15 m
510825	Data/power cable, 30 m
510800	Power Supply - 4 camera, 120 W. UL-listed
510809	Power Supply - 5 camera, 240 W

<sup>1</sup>Contact your regional sales manager for information regarding specialty camera cabling i.e. Qualisys underwater and MRI cameras

<sup>2</sup>Female-female coupler to connect two camera cables together

<sup>3</sup>Contact your regional sales manager for information regarding 5, 6, and 7 series protected camera cabling



## COMPUTER

The cameras can be used with a desktop or a laptop PC and communicate with the host computer through a single Ethernet cable - no additional hub is needed.

Article no.	Description
170491	Computer - Desktop Markerless Performance, no monitor
170495	Computer - Desktop with 24"
170498	Computer - Laptop
170499	Computer - NUC mini PC, no monitor
170500	Computer - Desktop Video Capture, no monitor



## CARRYING CASES

The Qualisys camera system can be stored in a special shock-proof carry case for safe transport. The case is ideal if the user needs a portable solution.



Article no.	Description
410700	Case for six Miquis cameras
410701	Case for Arqus and Miquis cables
510700	Case for four cameras, 5+wide & 7+
510701	Case for four cameras 210c, 5+, 6+
510705	Case for power supply and cables 5+, 6+, 7+
610700	Case for four Arqus cameras

## SUN FILTER

The Sun Filter is a custom made bandpass filter, engineered to match Qualisys camera lenses<sup>1</sup> perfectly. It removes more than 97% of the solar light with only a 20% reduction in strobe efficiency, which can be the difference between a successful capture session and a failed one when capturing in strong sunshine.

Article no.	Description
510105	Sun Filter for 22 mm lens
510108	Sun Filter for 40mm lens
510109	Sun Filter for 16 or 25mm lens
510118	Sun Filter for 12.5 mm lens
610100	Sun Filter - Arqus A5 standard
610101	Sun Filter - Arqus A5 narrow
610102	Sun Filter - Arqus A9 standard
610103	Sun Filter - Arqus A9 narrow
610104	Sun Filter - Arqus A26 narrow



<sup>1</sup> Narrow or wide-angle lenses can be purchased for select camera models. Contact your regional sales manager for details.



Distributor / Agent:

**QUALISYS**



**qualisys.com**

[sales@qualisys.com](mailto:sales@qualisys.com)

**Qualisys Europe**

Gothenburg, Sweden

**Qualisys Americas**

Chicago, USA

**Qualisys Asia Pacific**

Shanghai, China